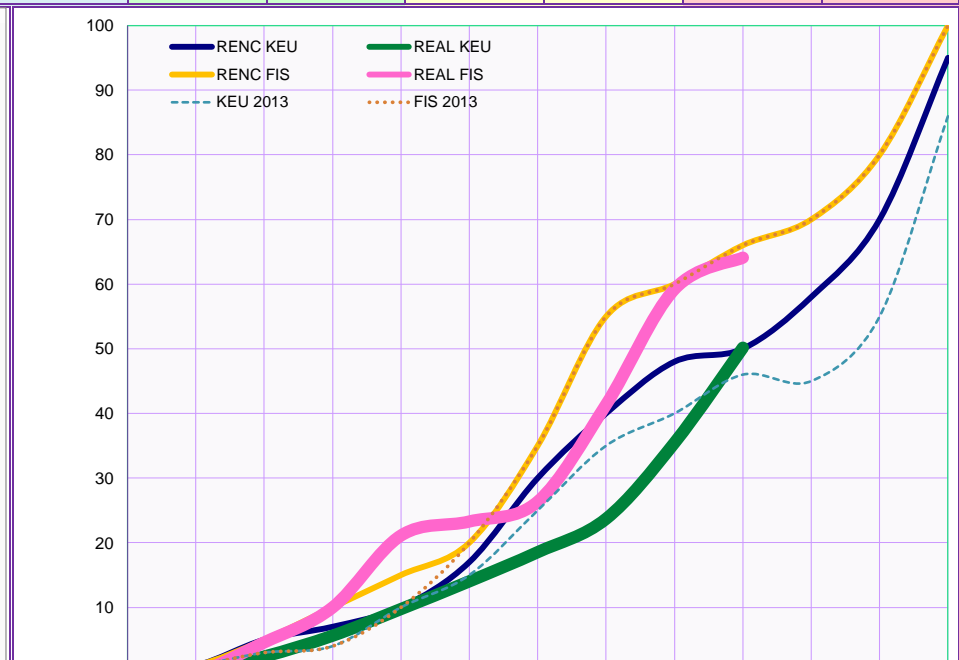
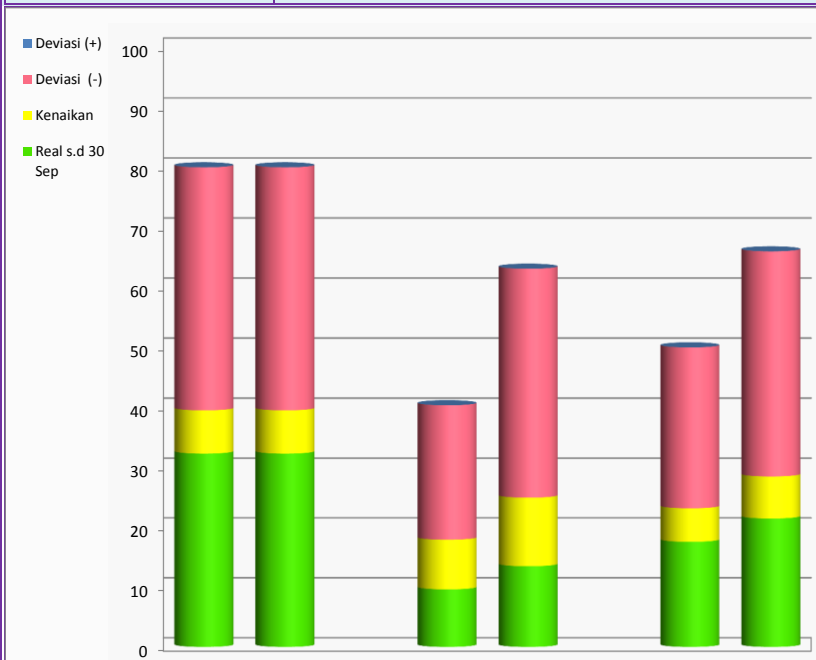


APBD 2014 KALIMANTAN TIMUR	DISBUN Rp. 60,571,250,878 (0.46%)	Target 30 Sep		Real s.d 30 Sep		Sisa H -5	
		Keu	Fis	Keu	Fis	Keu	Fis
		50.00	66.00	50.16	64.09	0.16	-1.91



Progres (%)	Jenis Belanja				Total	
	BTL		BL		Keu	Fis
Real s.d 30 Sep	32.30	32.30	9.61	13.48	17.56	21.46
Kenaikan	7.22	7.22	8.30	11.46	5.61	7.03
Deviasi (-)	40.49	40.49	22.44	38.17	26.83	37.52
Deviasi (+)	0.00	0.00	0.00	0.00	0.00	0.00
Target 30 Sep	80.00	80.00	40.35	63.11	50.00	66.00
Real s.d 30 Sep	39.51	39.51	17.91	24.94	23.17	28.48
Pagu Rp.	14,736,095,409		45,835,155,469		60,571,250,878	

	Jan	Feb	Mar	Apr	Mei	Jun	Jul	Agt	Sep	Okt	Nov	Des
RENC KEU	1	5	7	10	17	30	40	48	50	58	70	95
REAL KEU	0	2	6	10	14	19	24	35	50	0	0	0
RENC FIS	1	5	10	15	20	35	55	60	66	70	80	100
REAL FIS	0	5	10	21	23	26	41	59	64	0	0	0
KEU 2014	1	3	4	10	15	25	35	40	46	45	55	86
FIS 2014	1	3	4	10	20	35	55	60	66	70	80	100

No	KPA	Pkt	Rp (M)	Bobot (%)	Realisasi (%)		Status (Pkt)			
					Fis	Keu	B	H	K	M
Total		176	60,570	100	64	50	20	127	26	3
1	BTL	1	14.736	0	69	69	-	1	-	
2	Yus Alwi	47	9,686	0	66	46	-	28	19	
3	Henny. H	3	2,335	4	47	40	-	3	-	
4	Yusuf	8	4,035	7	43	39	-	6	1	1
5	Sukardi	15	6,079	10	68	22	-	15	-	
6	Bambang	13	15,223	25	66	49	6	7	-	
7	Irsal	24	2,175	4	75	68	4	19	1	
8	Supriyadi	35	3,514	6	47	42	3	28	2	2
9	Siti Rahmi	30	2,787	5	72	60	7	20	3	
10										

Samarinda, 30 September 2014

Kepala Dinas Perkebunan
Provinsi Kalimantan Timur,

(Signature)

Ir. Hj. Etnawati, MSi.
Pembina Utama Muda
NIP.19560924 198503 2 002

