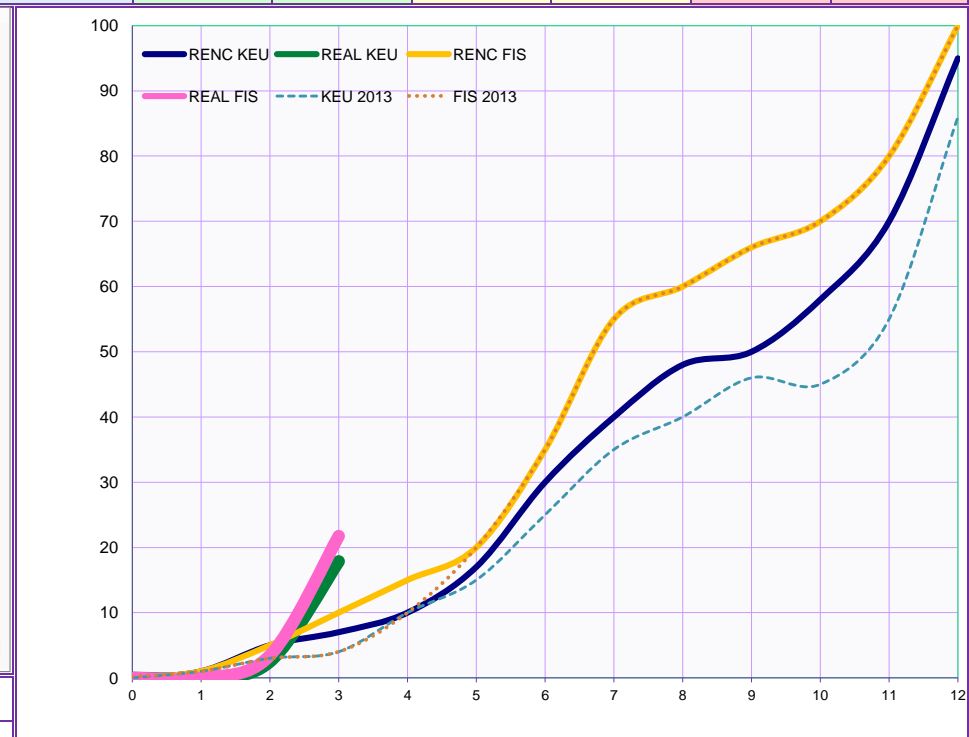
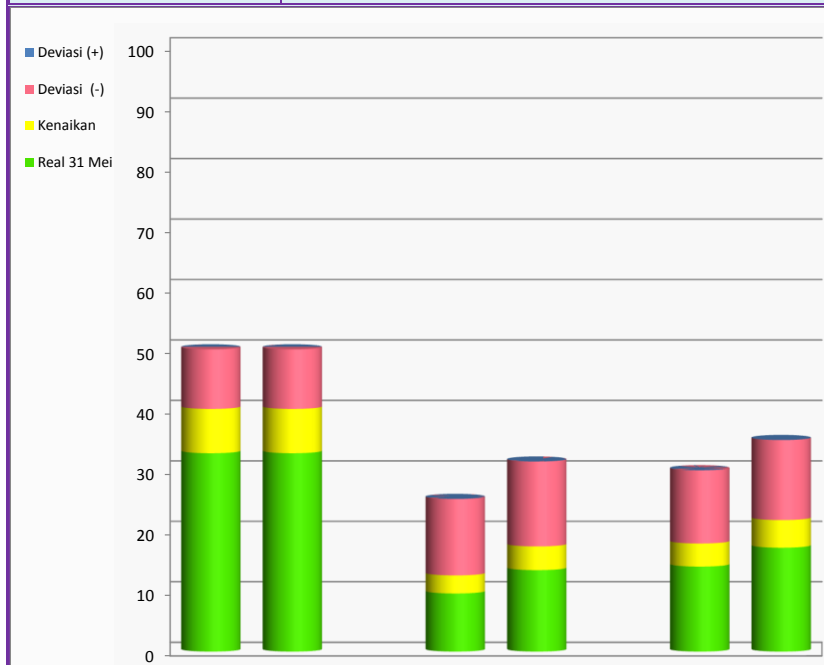


APBD 2014 KALIMANTAN TIMUR	DISBUN Rp. 75,617,126,034 (0.59%)	Target 30 Jun		Real s.d 30 Jun		Sisa H -5	
		Keu	Fis	Keu	Fis	Keu	Fis
		30.00	35.00	17.89	21.76	-12.11	-13.24



Progres (%)	Jenis Belanja				Total	
	BTL		BL			
	Keu	Fis	Keu	Fis	Keu	Fis
Real 31 Mei	32.81	32.81	9.61	13.48	14.06	17.19
Kenaikan	7.33	7.33	2.99	3.92	3.82	4.58
Deviasi (-)	9.85	9.85	12.65	14.04	12.11	13.24
Deviasi (+)	0.00	0.00	0.00	0.00	0.00	0.00
Target 30 Jun	50.00	50.00	25.25	31.44	30.00	35.00
Real s.d 30 Jun	40.15	40.15	12.61	17.40	17.89	21.76
Pagu Rp.	14,503,585,409		61,113,540,625		75,617,126,034	

	Jan	Feb	Mar	Apr	Mei	Jun	Jul	Agt	Sep	Okt	Nov	Des
RENC KEU	1	5	7	10	17	30	40	48	50	58	70	95
REAL KEU	0	3	18	0	0	0	0	0	0	0	0	0
RENC FIS	1	5	10	15	20	35	55	60	66	70	80	100
REAL FIS	0	3	22	0	0	0	0	0	0	0	0	0
KEU 2013	1	3	4	10	15	25	35	40	46	45	55	86
FIS 2013	1	3	4	10	20	35	55	60	66	70	80	100

No	KPA	Pkt	Rp (M)	Bobot (%)	Realisasi (%)		Status (Pkt)			
					Fis	Keu	B	H	K	M
Total		223	75.617	100	22	18	9	106	63	44
1	BTL	1	14.504	19	40	40	-	1	-	-
2	Yus Alwi	73	14.280	19	20	17	-	34	12	27
3	Henny. H	3	2.457	3	24	19	-	1	2	-
4	Yusuf	8	4.786	6	22	19	-	3	2	3
5	Sukardi	15	7.986	11	24	9	-	3	12	-
6	Bambang	14	20.304	27	6	5	-	4	10	-
7	Irsal	29	2.901	4	64	35	3	21	-	4
8	Supriyadi	46	4.685	6	21	8	-	20	20	6
9	Siti Rahmi	34	3.716	5	7	24	6	19	5	4
10										

Samarinda, 30 Juni 2014

Kepala Dinas Perkebunan  
Provinsi Kalimantan Timur,

Ir. Hj. Etnawati, MSi.

Pembina Utama Muda

NIP.19560924 198503 2 002

