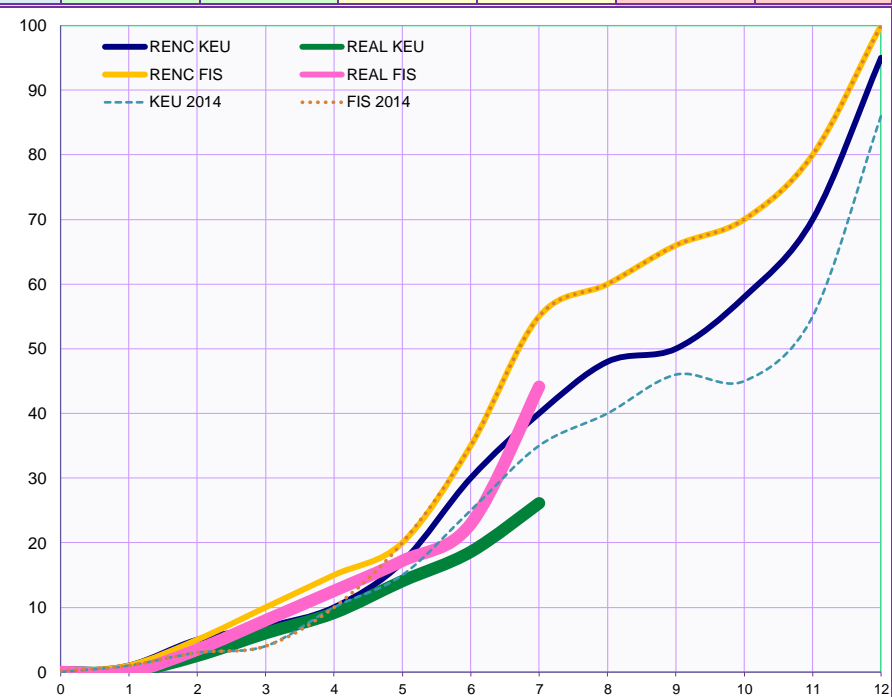
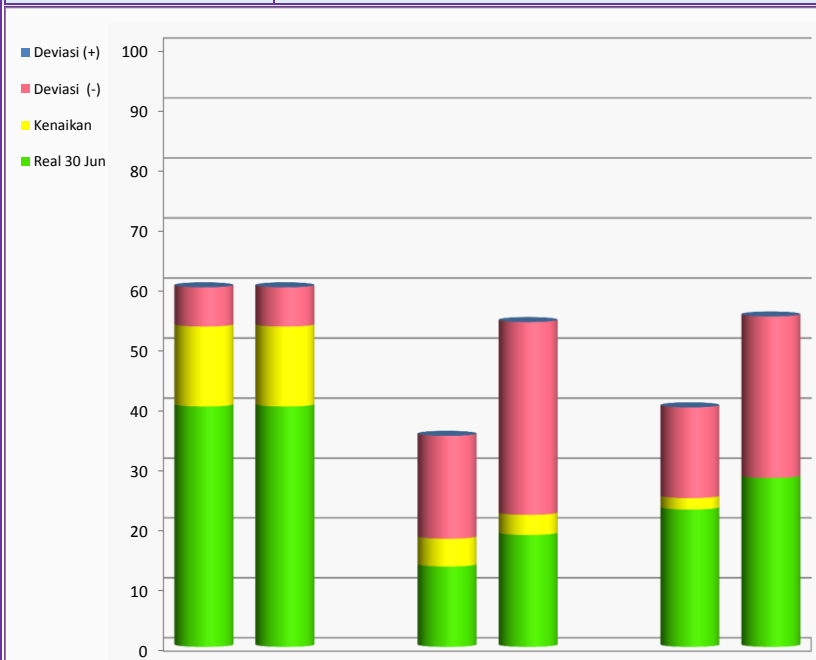


APBD 2014 KALIMANTAN TIMUR	DISBUN Rp. 75,617,126,034 (0.59%)	Target 31 Juli		Real s.d 31 Jul		Sisa H -5	
		Keu	Fis	Keu	Fis	Keu	Fis
		40.00	55.00	24.87	28.09	-15.13	-26.91



Progres (%)	Jenis Belanja				Total	
	BTL		BL			
	Keu	Fis	Keu	Fis	Keu	Fis
Real 30 Jun	40.15	40.15	13.43	18.70	22.96	28.23
Kenaikan	13.32	13.32	4.65	3.36	1.90	0.00
Deviasi (-)	6.54	6.54	17.18	32.15	15.13	26.91
Deviasi (+)	0.00	0.00	0.00	0.00	0.00	0.00
Target 31 Juli	60.00	60.00	35.25	54.21	40.00	55.00
Real s.d 31 Jul	53.46	53.46	18.08	22.06	24.87	28.09
Pagu Rp.	14,503,585,409		61,113,540,625		75,617,126,034	

	Jan	Feb	Mar	Apr	Mei	Jun	Jul	Agt	Sep	Okt	Nov	Des
RENC KEU	1	5	7	10	17	30	40	48	50	58	70	95
REAL KEU	0	3	6	9	14	19	26	0	0	0	0	0
RENC FIS	1	5	10	15	20	35	55	60	66	70	80	100
REAL FIS	0	3	8	13	17	23	44	0	0	0	0	0
KEU 2014	1	3	4	10	15	25	35	40	46	45	55	86
FIS 2014	1	3	4	10	20	35	55	60	66	70	80	100

No	KPA	Pkt	Rp (M)	Bobot (%)	Realisasi (%)		Status (Pkt)			
					Fis	Keu	B	H	K	M
Total		223	75.617	100	19	20	9	115	55	43
1	BTL	1	14.504	19	40	40	-	1	-	-
2	Yus Alwi	73	14.280	19	-	22	-	42	6	25
3	Henny. H	3	2.457	3	24	28	-	2	1	-
4	Yusuf	8	4.786	6	22	19	-	3	2	3
5	Sukardi	15	7.986	11	24	10	-	3	12	-
6	Bambang	14	20.304	27	6	5	-	4	10	-
7	Irsal	29	2.901	4	64	35	3	21	-	4
8	Supriyadi	46	4.685	6	21	16	-	20	19	7
9	Siti Rahmi	34	3.716	5	28	24	6	19	5	4
10										

Samarinda, 31 Juli 2014

Kepala Dinas Perkebunan
Provinsi Kalimantan Timur,

Ir. Hj. Etnawati, MSi.
Pembina Utama Muda
NIP.19560924 198503 2 002